



BMA HOUSE
LONDON

Summer Food Festival

Summer parties at BMA House

Contents

Summer Food Festival	3
Packages and pricing	4
Entertainment options	9
Our local suppliers	10
How to find us	11
Clean air walking route	12
Important contacts	13
Sustainability & accessibility	14



Summer Food Festival

A curated outdoor environment for all occasions this summer, right in the heart of central London.

Join us this summer in our iconic Courtyard or our intimate Garden, grab a glass of wine or a refreshing, locally brewed beer, and soak up the sun whilst deciding which dishes from our vibrant food stalls will satisfy your taste buds.

Situated 6 minutes' walking distance from Euston station, and around the corner from King's Cross and Russell Square stations, we are in a prime position no matter where you and your guests are travelling from.

Our magnificent Courtyard is the perfect space for your party. Steeped in rich history, featuring our water fountain memorial, it provides a certain wow factor that always surprises all our visitors here at BMA House. It is the perfect suntrap on sunny days, is very private, and provides plenty of space for up to 320 guests.

Fancy something more intimate? Our Garden is ideal for up to 90 guests, and is even more tranquil than the Courtyard. An abundance of greenery surrounds our stunning pond, come and experience a little piece of paradise away from the hustle and bustle.

Packages and pricing

Our summer spaces

Number of guests	Prices	Spaces
60 – 90	£122 pp	Garden and Garden room
110 – 150	£127 pp	Courtyard and Snow room
150 – 320	£127 pp	Courtyard, Snow and Paget rooms

Prices excluding VAT





Food Festival in the Courtyard

Our Food Festival in the Courtyard includes:

- Hire of the Courtyard (18:30 - 23:00)
- Hire of an indoor space (18:30 - 23:00)
- Three food stalls (details on the following page)
- Four drinks per person, served from our outside bars (soft drinks always available)
- Summer games, including table tennis and pool tables
- Poseur tables, deck chairs, garden furniture & parasols
- Outdoor PA system, AV tech and wireless uplighters
- Indoor PA system for background music, microphone and uplighters
- Dedicated Event Planner
- Event security
- Cloakroom area



Food Festival in the Courtyard

Your package will include three food stalls, carefully selected and delivered by our wonderful chefs:

Indian street food (vegan)

Combination of popular street food around India which is based on vegan ideas. Both served with cucumber, tomato & crispy chickpea salad, sweet & sour chutney, and assorted poppadum.

Dhokla

Most loved Gujrati Street food, chickpea sponge tempered with mustard & cumin seeds, served with sweet & sour chutney

Samosa chaat

Mix vegetable samosa, served with coconut & date yoghurt, coriander chutney & fresh kachumber salad

Dirty Hot Dog

- Hot dogs with a mixture of toppings
- Vegan options available

Pizza Truck

- Mozzarella, basil and tomato sauce
- Pepperoni, mozzarella & tomato sauce
- Vegan options available

Add on a selection of mini ice cream pots from Hackney Gelato, for **£4** +VAT per person

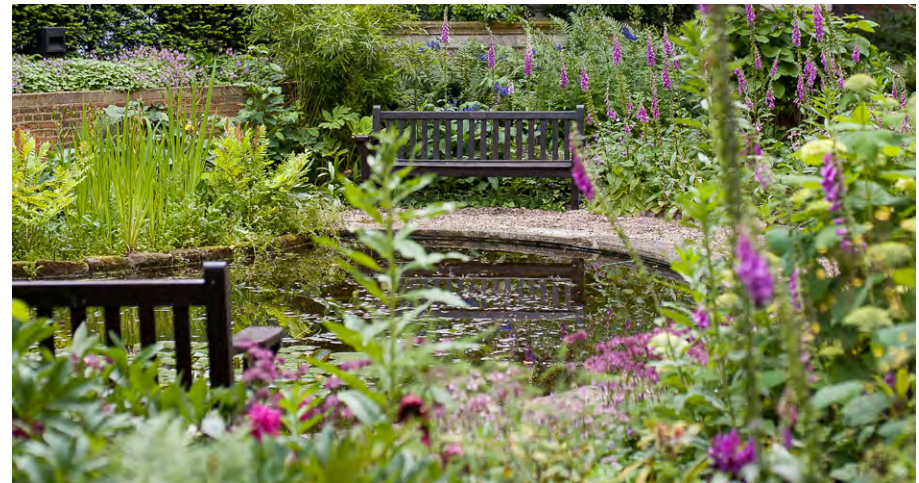




Food Festival in the Garden

Our Food Festival in the Garden includes:

- Hire of the Garden (18:30-22:00)
- Hire of an indoor space (18:30-23:00)
- Three food stalls (details on the following page)
- Four drinks per person (soft drinks always available)
- Garden games
- Poseur tables & parasols
- Indoor PA system for background music, microphone and uplighters
- Dedicated event planner
- Event security
- Cloakroom area



Food Festival in the Garden

Your package will include three food stalls, carefully selected and delivered by our wonderful chefs:

Indian street food (vegan)

Combination of popular street food around India which is based on vegan ideas. Both served with cucumber, tomato & crispy chickpea salad, sweet & sour chutney, and assorted poppadum.

Dhokla

Most loved Gujrati Street food, chickpea sponge tempered with mustard & cumin seeds, served with sweet & sour chutney

Samosa chaat

Mix vegetable samosa, served with coconut & date yoghurt, coriander chutney & fresh kachumber salad

Dirty Hot Dog

- Hot dogs with a mixture of toppings
- Vegan options available

Arancini – bowl food

- Italian deep fried rice balls with mushroom & cheese

Add on a selection of mini ice cream pots from Hackney Gelato, for **£4 +VAT** per person





Entertainment options

Personalise your party

DJ

From **£650 +VAT** up to five hours

Outside coloured lighting

POA

Caricaturist

From **£650 +VAT** up to 3 x 45 minute sets over three hours

Magician

From **£595 +VAT** up to 3 x 45 minute sets over three hours

Mobile Moments Photo Booth

From **£950 +VAT** up to four hours

360 Photo Booth

From **£995 +VAT** up to four hours

All add-ons must be pre-booked and are subject to availability.

Something else you fancy that you don't see here? Give our experienced team a call to discuss bespoke options. We have hand selected our suppliers with a sustainable ethos.



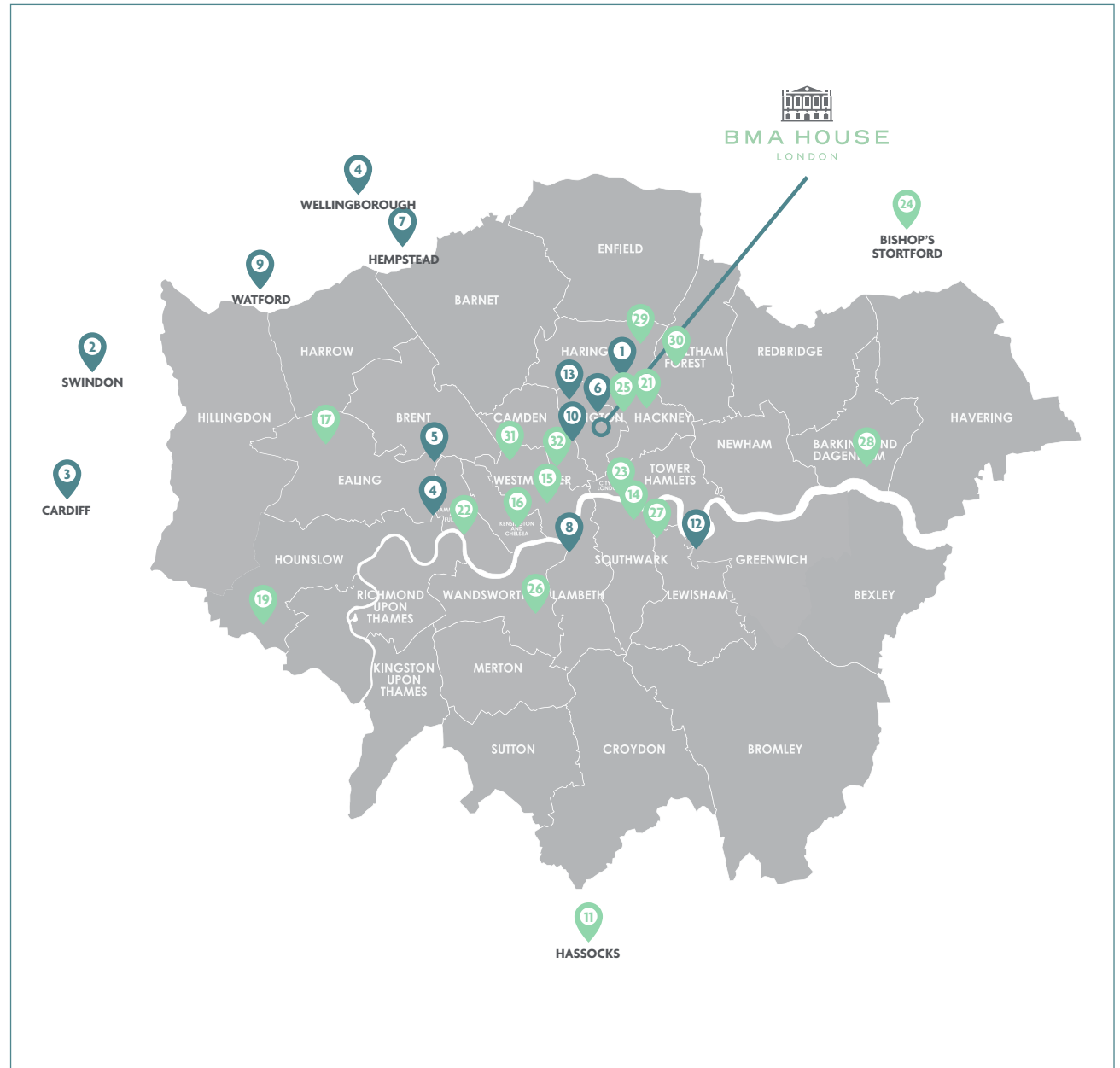
London Larder

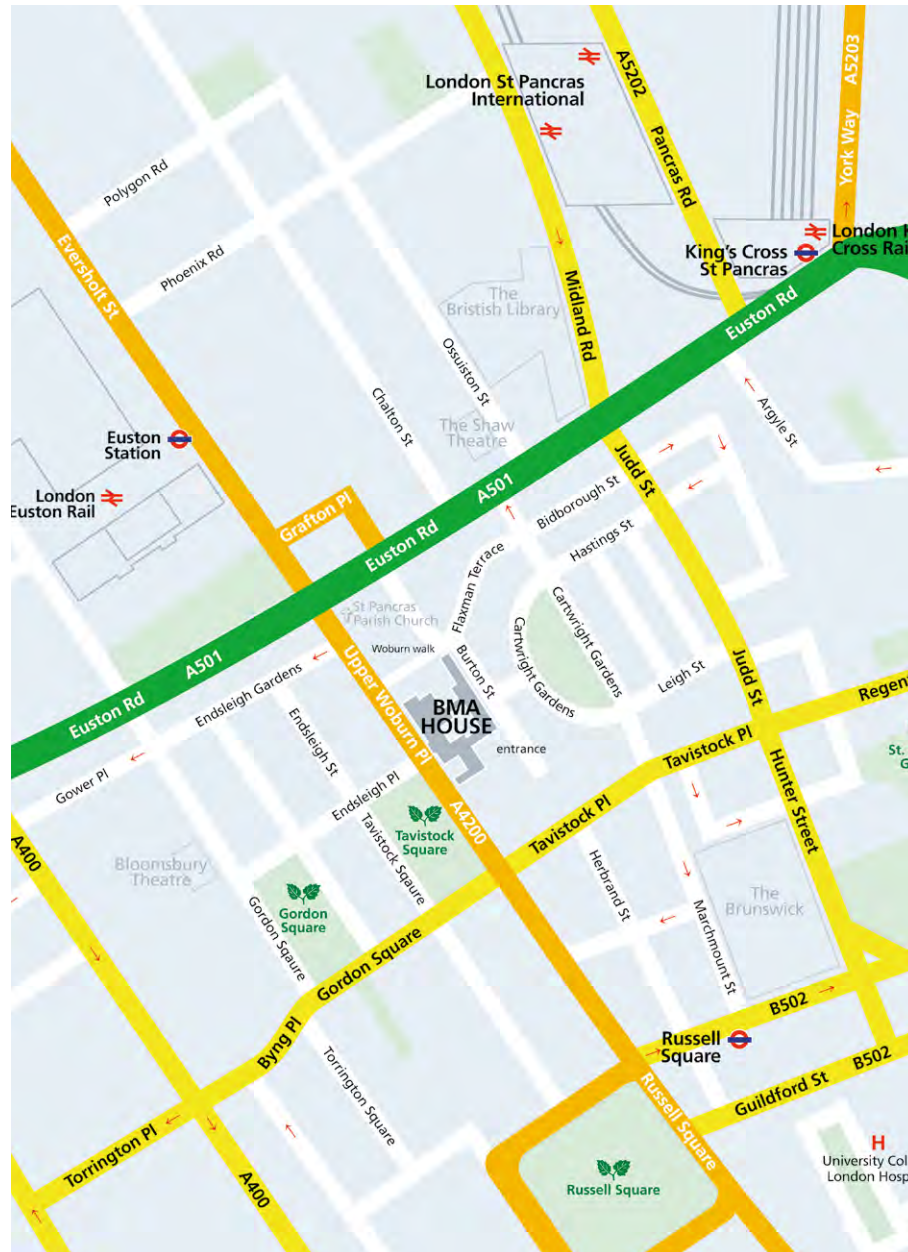
We've handpicked a collection of exceptional suppliers from London and beyond, including B Corp, VCSE, and diverse-owned businesses, who share our passion for craft, quality, and sustainability. Together they help us fill our menus with fresh, responsibly sourced ingredients.

www.companyofcooks.com/community

Our suppliers

- | | |
|--|-------------------------------------|
| 1. Dalston Juice
B-CORP | 14. Paul Rhodes Bakery |
| 2. Dash Water
B-CORP | 15. Cobble Lane Cured |
| 3. Dormen Foods
Diverse Ownership | 16. The Wild Room |
| 4. Flawsome Drinks
B-CORP | 17. Paxton & Whitfield |
| 5. Freshways Dairy
Diverse Ownership | 18. Sally Clarke Bakery |
| 6. La Latteria
Diverse Ownership | 19. Belazu |
| 7. Luminary Bakery
VCSE | 20. Ellis Wines |
| 8. Hope & Glory
Diverse Ownership | 21. H. Forman & Son |
| 9. Rubies in the Rubble
B-CORP/Diverse Ownership | 22. HG Walter |
| 11. Vegetarian Express
B-CORP | 23. The London Honey Company |
| 12. Well Grounded
Diverse Ownership/VCSE | 24. Marrfish |
| 13. Ridgeview Wine
B-CORP | 25. London Borough of Jam |
| | 26. Brindisa |
| | 27. Smith & Brock |
| | 28. Wild Harvest |
| | 29. Celtic Bakers |
| | 30. Hackney Gelato |
| | 31. Truffle Guys |
| | 32. Two Tribes |





How to find us

Location

Opposite Tavistock Square, on Upper Woburn Place, London.

Tube

Euston (6 minute walk).

St Pancras (12 minute walk).

SatNav Post Code

Tavistock Square entrance: **WC1H 9JZ**

Access for organisers

Our standard offer is access from 17:30hrs, however should there be availability nearer to the date of the party, we will review the option to offer earlier access complimentary.

Finish times

Last drinks at 23:00, venue close at 23:30

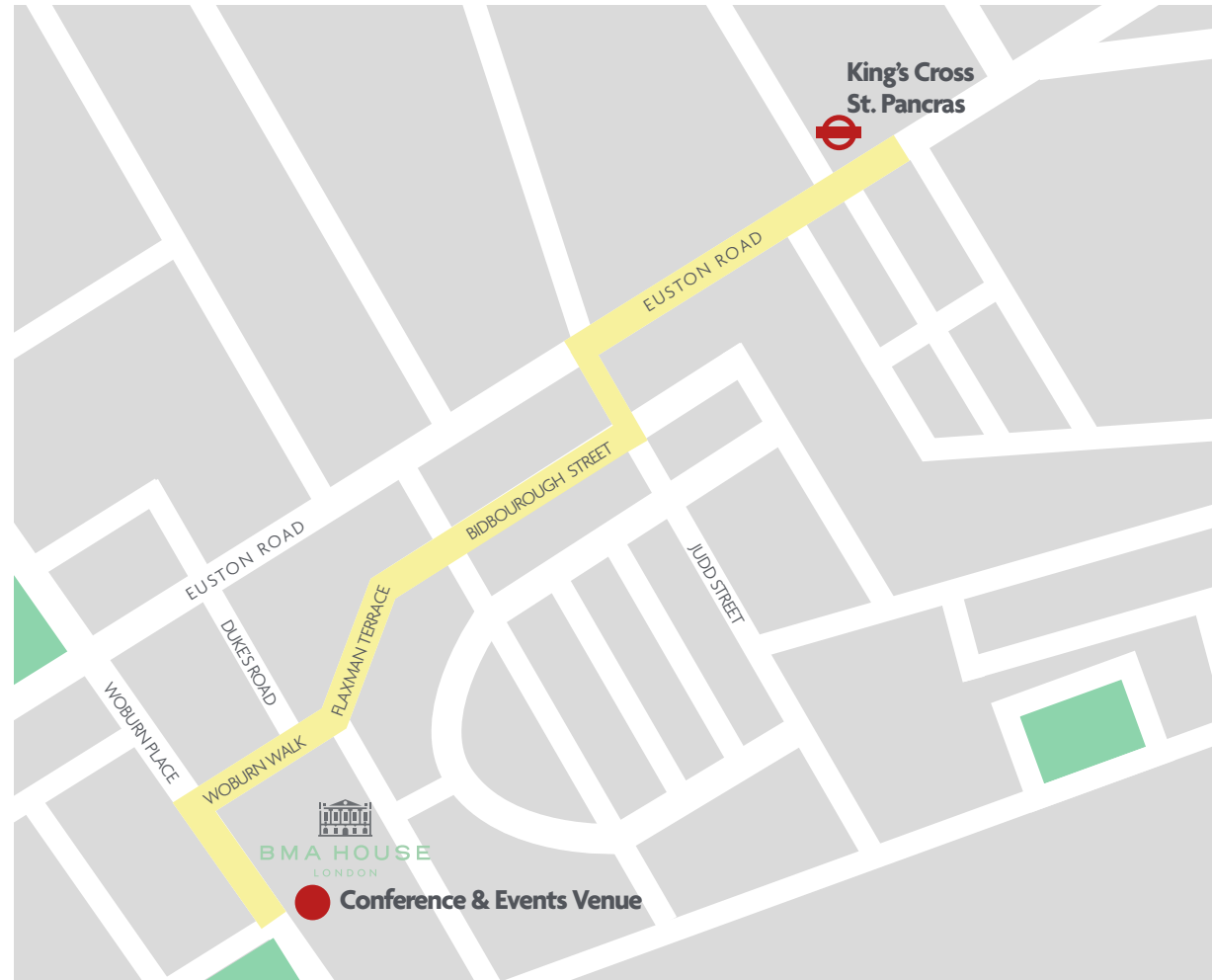


Clean air walking route

Walking from Kings Cross to BMA House?

Take the clean air route

Discover more clean air routes at www.cleanairroutes.london





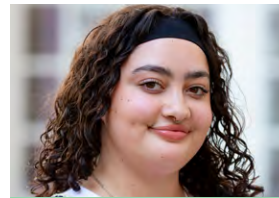
Important contacts

Our team of expert event planners are here to assist you with all your summer party needs

The Events Team

Our events team are ready to hear from you.

Call us now on **020 7874 7020** or email events@bma.org.uk



Cirena Springer



Jonathan Lamb



Ellie Low



Nicola Carrillo



Sasha Lee



Tricia Spencer

Sustainability & accessibility

As the home of the British Medical Association, BMA House has long recognised the importance of sustainability and how our actions impact those we serve as well as wider society. We understand that placing sustainability at the heart of what we do provides long-term benefits for human health and wellbeing.

Our continued commitment has won us numerous sustainability awards

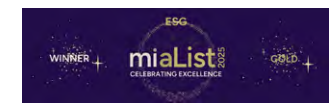
On our ever evolving journey towards reducing our impact on the environment we have made the following achievements and implemented the following measures:

- Zero food waste policy
- Vegetable peelings turned into chutney
- Set menus to reduce food waste
- Meat-free Mondays
- Removed high impact red meat from menus
- 70% of our menus are vegetarian / vegan
- Filter & bottle water on-site
- Seasonal & local food – see our ‘London Larder’ map
- Electricity from 100% renewable energy
- LED light bulbs used in all light fittings
- Motion-sensitive lighting installed throughout the building
- Laptops reused or repurposed & sent to charities & local schools
- All paper, card, glass, cans & plastic waste is recycled

- Eliminated single-use plastics
- Removed disposable cups from the Café, saving 1.8 tonnes of physical waste per month
- Four EV charging points in the car park
- Biodiverse landscaping in our Courtyard to enhance habitats
- Clean Air Walking Route, taking guests on a less polluted route to BMA House
- Delegate carbon footprint reduced by 69% (since 2018)
- Water usage reduced by 5.4 million litres per year
- Herbs from our Garden used as part of catering provisions
- Carbon neutral interior design and decor
- Green travel policy for staff, including a Cycle to Work scheme
- Sustainable IT infrastructure
- Wellbeing focused options to enhance event experience
- Community engagement, planting wildflowers in the local area.

Accessibility

Here at BMA House, accessibility is hugely important to us. We are committed to creating a welcoming and inclusive space and removing any barriers to participation in events at BMA House. We understand that everyone’s accessibility needs are different, which is why having detailed, accurate information is so important. All of the details you’ll find in the guides have been checked in person, on site, by trained surveyors.





BMA HOUSE
LONDON

Where history meets sustainability, and service meets excellence

BMA House
Tavistock Square
London, WC1H 9JP

T: 020 7874 7020
E: events@bma.org.uk
bmahouse.org.uk

@[bmahousevenue](https://www.instagram.com/bmahousevenue)
[/bmahouse](https://www.facebook.com/bmahouse)
[/company/bma-house](https://www.linkedin.com/company/bma-house)